

# RTprocess

advancing technologies

*Our company was formed as a result of a need in the chemical industry for companies who work with partners to develop process technology. Our goal is to support our customers not only with manufacturing services but with process development and enhancement as well.*

*We do this by working with our customers to try different process conditions and process steps which may lead to improved yields, better product quality, lower cost, or ease of manufacturing. We strive to be an extension of our customers' engineering staff.*

*We believe our approach will result increased results for our customers.*

*We stand ready to prove our approach on your process and to show you why it will yield the greatest benefit to your company.*



## Custom Manufacturing

### What We Do

*Solids Processing  
Designed For The  
Catalyst Industry*

*Equipment Scale -  
Trial Batch  
Or  
Initial Manufacturing*

### Benefits to You

*Rapid Turnaround  
with timeframes to meet  
your needs*

*Responsible  
IP management*

*Risk Management  
systems in place to insure  
safety, health,  
environmental  
stewardship*

### Our Commitment

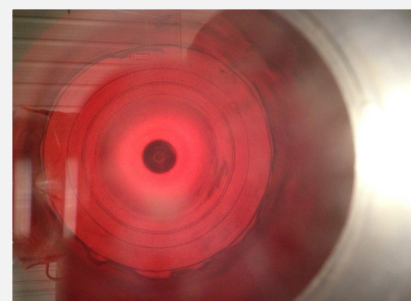
*100% Satisfaction*

*To advance our  
customer's process  
development or toll  
manufacturing needs in a  
cost effective way*

Our 8000 square foot facility is located in Wilmington, Ohio.

Our current capabilities include:

- Blending & Impregnation
  - \* Plow & Tumble
- Drying
  - \* Rotary & Static
- Calcining
  - \* Rotary
- Milling
  - \* Hammer
- Screening
  - \* Vibratory



311 Davids Drive  
Wilmington, Ohio 45177  
513-885-2359 (phone)  
937-556-6022 (fax)  
Inquiries@rapidtechprocess.com

[www.rapidtechprocess.com](http://www.rapidtechprocess.com)

